



# PERFORMANCE DRIVER

## KS P240/KS P243 – RESILIENT | DYNAMIC | RELIABLE

### FEATURES AND CHARACTERISTICS

- Very high load capacity
- Good resistance to wear
- Very good adaptability
- Usage in hydrodynamic applications

### OPERATING CONDITIONS

- |                  |       |
|------------------|-------|
| Dry              | ○ ○ ○ |
| Oil-lubricated   | ● ● ● |
| Greased          | ● ● ● |
| Water-lubricated | ● ○ ○ |

### TYPICAL APPLICATIONS

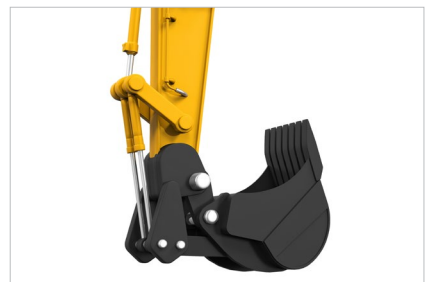
#### Breaks / Chassis



#### Mechanical engineering



#### Construction machines



### Additional Applications:

- Kingpins
- Pumps
- Suspension
- Industrial trucks
- and many more

For further applications please contact our technical support.

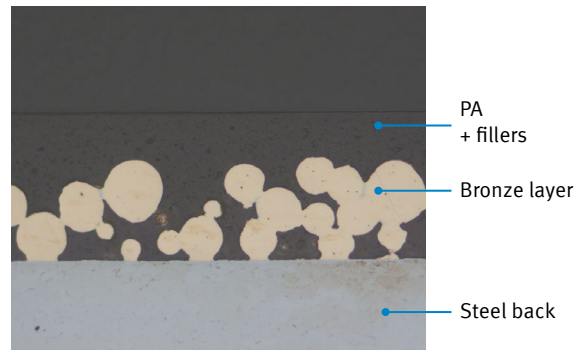
## BEARING STRUCTURE

Sliding elements

- Steel back (DC04)
- Porous sintered bronze layer
- PA sliding layer with fillings

Characteristics

- Suitable for tribological systems with initial lubrication or hydrodynamic systems with increased proportion of mixed friction



## MATERIAL CHARACTERISTICS

| Characteristic values               |                        | Value                             | Unit                 |
|-------------------------------------|------------------------|-----------------------------------|----------------------|
| Permissible specific bearing load p | Static                 | 250                               | [N/mm <sup>2</sup> ] |
|                                     | Very low sliding speed | 200                               | [N/mm <sup>2</sup> ] |
|                                     | Oscillating            | 150                               | [N/mm <sup>2</sup> ] |
| Permissible sliding speed v         | Oil-lubricated         | 7                                 | [m/s]                |
|                                     | Greased                | 3                                 | [m/s]                |
| Permissible temperature range       |                        | -60 to +150<br>(short-term: +200) | [°C]                 |
| Thermal conductivity                |                        | >3                                | [W/(m * K)]          |

## QUALITY

- The complete manufacturing process is monitored and controlled by a proven set of quality assurance measures

## CERTIFICATES

- Made in Germany
- ISO9001, ISO14001, ISO50001, IATF 16949

## SUSTAINABILITY



## CONTACT

bearing@de.rheinmetall.com  
Phone: +49 6227-5 60

KS Gleitlager GmbH does not assume any liability for the completeness of the data presented in this material brochure. It is exclusively up to the customer to form his opinion about the characteristics of the material and its adequacy for the purposes intended by the customer. KS Gleitlager GmbH would also like to stress that any information given in this materials brochure does not constitute a legal guarantee for the appearance, characteristics and workmanship nor does it represent a warranted quality.